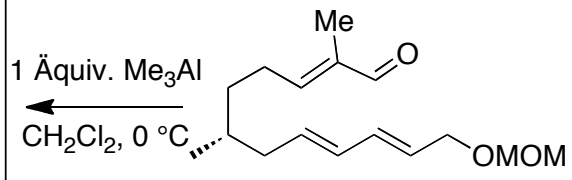
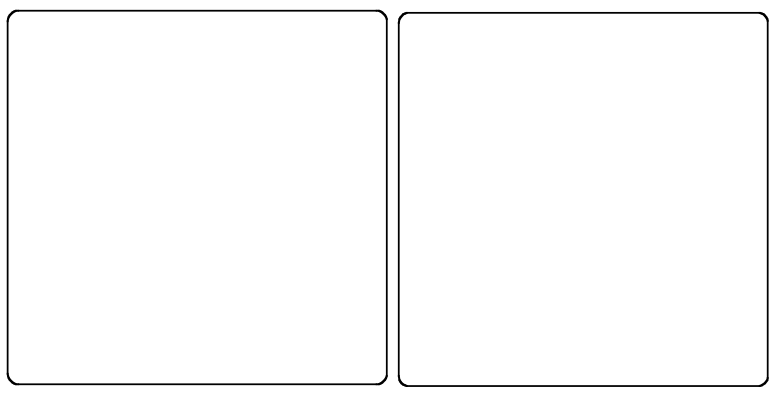
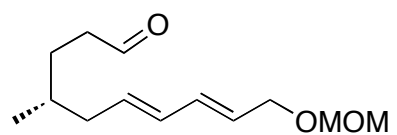
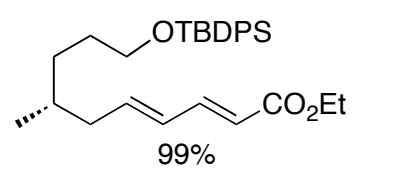
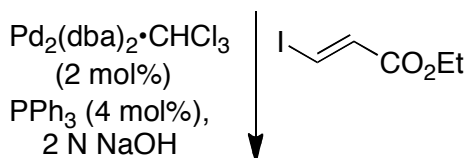
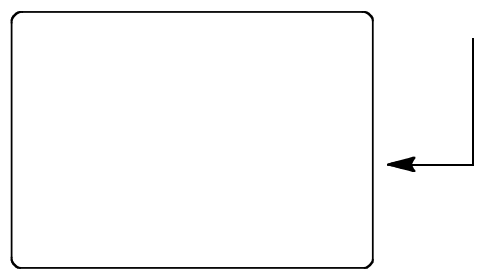
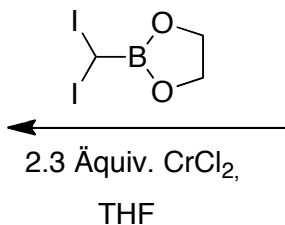
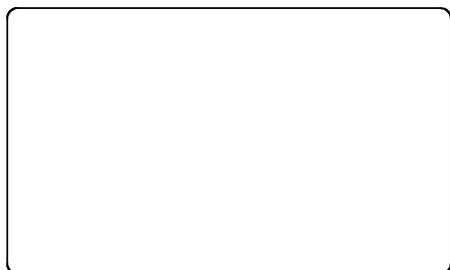


# Worksheet 31



- 1)  $\text{NaBH}_4$ , EtOH,  $0\text{ }^\circ\text{C}$
- 2) TBDPS-Cl, Imidazol, 4-DMAP,  $\text{CH}_2\text{Cl}_2$  (92%)
- 3) TMS-Br,  $\text{CH}_2\text{Cl}_2$  (99%)

