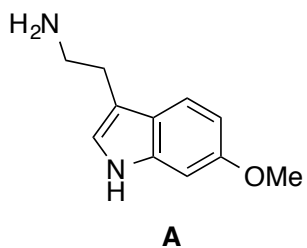
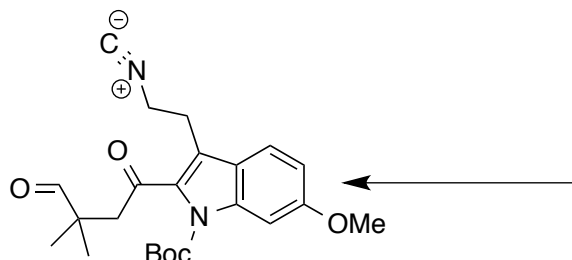
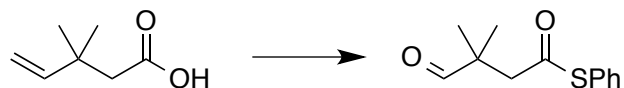


# Worksheet 35



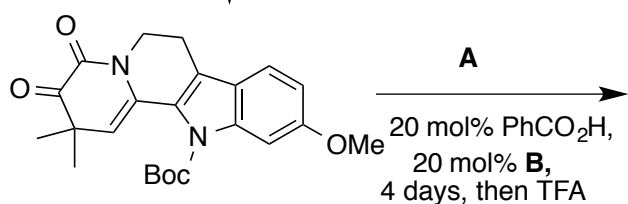
- 1) HCOOEt, 55 °C
- 2) Boc<sub>2</sub>O, DMAP, DMF, r.t.
- 3) TMPLi, THF, -78 °C, then Bu<sub>3</sub>SnCl



- 1) TFA, Py, DCM/H<sub>2</sub>O
- 2) NCS, Me<sub>2</sub>S, then Et<sub>3</sub>N, DCM, -78 °C

**or**

- MeNHOH·HCl  
AcOH, NaHCO<sub>3</sub>,  
4Å MS, MeOH



**B**

